



NOTICE OF RACE

INTERNATIONAL 5o5 CLASS

2025 WORLD CHAMPIONSHIP
AUSTRALIAN CHAMPIONSHIP

&

PRE- WORLDS REGATTA

Adelaide, Australia
29 Dec 2024 – 7 Jan 2025

The organizing authority (OA) is Adelaide Sailing Club, in conjunction with Henley Sailing Club

Event website: <https://www.int505.org/2025-505-world-championships-adelaide-australia/>

ALL TIMES ARE ACDT (UTC + 10.30)

[DP] denotes a rule for which the penalty is at the discretion of the International Jury and may be less than disqualification. The notation '[NP]' in a rule means that a boat may not protest another boat for breaking that rule. This changes RRS 60.1(a).

1. DEFINITIONS

1.1 Event

The term event refers to the organised 5o5 on-water and off-water activities taking place at Adelaide Sailing Club premises or adopted premises from 29 Dec 2024 to 7 Jan 2025.

1.2 Organising Authority

1.2.1 Adelaide Sailing Club (ASC) in conjunction with Henley Sailing Club (HSC).

1.2.2 The term Organising Authority encompasses anyone helping to run the event including the Organising Authority. This includes but is not restricted to; ASC and HSC staff and volunteers, South Australian, Australian, and International 5o5 Association volunteers, the event delivery team, the Race Committee, the Race Officer, support vessel crews and beach masters. It excludes any of the sponsors or their staff.

2. RULES

2.1 The Pre-Worlds regatta will be governed by the rules as defined in *The Racing Rules of Sailing 2021-2024*.

2.2 The Worlds and Australian Championship regatta will be governed by the rules as defined in *The Racing Rules of Sailing 2025-2028*.

2.3 The International 5o5 Class Championship Rules and Guidelines shall apply.

2.4 An International Jury will be appointed for the World and Australian Championships in accordance to RRS 91(b). Its decisions will be final as provided in RRS 70.5.

2.5 The following rules will be changed:

2.5.1 RRS 29.1 shall be changed so that individual recall does not apply at gate starts.

2.5.2 RRS 40 (personal flotation device) shall apply at all times whilst afloat without the need for flag Y to be displayed.

2.5.3 RRS 41 shall be changed so that crew can be returned to their dinghy.

2.5.4 For the Pre-Worlds regatta RRS 42.3 c) and for the Worlds and Australian Championships regatta RRS 42.3 c)1) are replaced by Class Rule B13 as follows:

“Except on a beat to windward, when surfing (rapidly accelerating down the face of a wave) or planing is possible, the boats crew may pull the sheet and guy controlling any sail in order to initiate or maintain surfing or planing, but not more than three repeated pulls and releases of the sail may be made for each wave or gust of wind.”.

2.6 No National prescriptions will apply.

2.7 Subject to the approval of the Race Committee, a boat may declare at the time of entry or registration a sail number which may be different from the registered number of the hull provided that the number declared shall not be the number of any other boat competing in the regatta.

2.8 If there is a conflict between languages, the English text will prevail.

2.9 Australian Law shall prevail.

3. ADVERTISING AND MEDIA

3.1 Boats and competitors shall comply with World Sailing Regulation 20, Advertising Code. Boats may be required to display advertising chosen and supplied by the Organising Authority or International 5o5 Class Association. If this rule is broken, World Sailing (WS) Regulation 20.9.2 applies. [DP]

3.2 Boats may be required to display additional identification numbers (bow numbers).

- 3.3 Competitors automatically grant to the Organising Authority and the International 5o5 Class Association, without payment, the right in perpetuity to make, use and show any motion pictures, still pictures and live, taped or filmed television of or relating to the event.

4. ELIGIBILITY AND ENTRY

- 4.1 The World Championship and Pre-Worlds are open to all members of the 5o5 Class Yacht Racing Association.
- 4.2 The Australian Championship is open to all members of the Australian 5o5 Class Yacht Racing Association who hold Australian Citizenship or Permanent Residency and are members of an Australian Sailing affiliated Club.
- 4.3 The "Classic 5o5" division will require a dinghy with the boat number 8603 or older OR minimum 90% timber construction.
- 4.4 All competitors must be current members of their National 5O5 Association or individual members of the International 5o5 Association.
- 4.5 Entries are to be completed by 30 Nov 2024 together with payment of the entry fee as in NOR 5.
- 4.6 All competitors shall comply with RRS 75
- 4.7 Competitors under the age of 18 years at the time of the event shall be required to complete and lodge the parental/guardian consent form included on the entry form at time of registration and prior to commencement of racing. The decision to race is therefore the responsibility of that parent or guardian.
- 4.8 Boats may be requested to carry cameras, sound equipment or positioning devices as specified and provided by the Organizing Authority (OA).
- 4.9 Late entries will be accepted up to 1 Jan 2025 at the discretion of the Organising Authority and will incur the late entry fee outlined in NOR 5.
- 4.10 The entry process and payment methods will open on the regatta website on or before 30th September 2024: [5o5 WORLD CHAMPIONSHIPS 2025](#)

5. FEES

- 5.1 Entry forms must be completed online – [5o5 WORLD CHAMPIONSHIPS 2025](#)
- 5.2 Entry Fee is \$1250 AUD (includes \$113.64 GST) up to 30 Nov 2024
- 5.3 Late Entry Fee (after 30 Nov 2024) shall be an additional \$150 AUD GST INCL.

6. SCHEDULE

Date	Event/Race	Details	Time of Event Or Warning Signal
Sun 29 Dec 24	Measurement and registration all boats. Opening Ceremony/competitors meeting/drinks-	ASC ASC	0800 – 1600 1800
Mon 30 Dec 24	Pre – Worlds Racing Daily Presentations and Prizes Australian 505 Class AGM	First Race Warning ASC Can Bar Upstairs ASC	1255 1800 1900
Tues 31 Dec 24	Pre – Worlds Racing Pre – Worlds Presentation New Years Eve	First Race Warning ASC HSC	1255 1800 2000
Wed 1 Jan 25	New Year’s Day Measurement and registration	ASC	1100 - 1600
Thu 2 Jan 25	World Championship Racing Daily Presentations and Prizes	First Race Warning ASC Can Bar	1255 1800
Fri 3 Jan 25	World Championship Racing Daily Presentations and Prizes	First Race Warning ASC Can Bar	1255 1800
Sat 4 Jan 25	World Championship Racing Daily Presentation and Prizes	First Race Warning ASC Can Bar	1255 1800
Sun 5 Jan 25	Reserve Day		
Mon 6 Jan 25	Worlds AGM Morning World Championship Racing Daily Presentations and Prizes	Upstairs ASC First Race Warning ASC Can Bar	0930 1255 1800
Tues 7 Jan 25	World Championship Racing Final Worlds Presentation and Prizes	First Race Warning <i>No warning signal after</i> Upstairs ASC	1055 1530 1900

(Social events and shore times are subject to change to suit the racing program)

- 6.1 10 races are scheduled for the Worlds and 6 races are scheduled for the Pre-Worlds.
- 6.2 All Worlds races will also be Australian Championship races.
- 6.3 There will be a maximum of three races per day during the Pre-Worlds, Worlds and Australian Championships.
- 6.4 When more than one race will be held on the same day, the warning signal for each succeeding race will be made as soon as practicable, after the finish of the previous race.
- 6.5 On the last day of the World and Australian Championships, no warning signal will be made after 1530.

7. MEASUREMENT & EQUIPMENT INSPECTION [DP]

- 7.1 Each boat shall present a valid measurement certificate.
- 7.2 Boats may be required to present for measurement, inspection and weighing both during the Registration and Measurement times specified in this Notice of Race, and, for spot checks at any time during the regatta. *Competitors attention is drawn to RRS 78 and Class Rule 4.6 with the technical committee to pay close attention to Class Rule 5.8 (Weight).*
- 7.3 Each boat shall carry on board at all times while afloat:
 - A tow line of at least 10metres in length and 6mm in diameter;
 - A tow loop at the front of the boat to run the tow rope through;
 - A paddle with a minimum blade area of 250mmx125mm and minimum length of 750mm;
- 7.4 An approved personal flotation device (to the Australian Standard or equivalent)

- International Standard) for each crew member and to be worn at all times while afloat.
- 7.5 The Technical Committee reserves the right to require any boat or sail to be further submitted for measurement at any time during the event.
- 7.6 The fact that the Technical Committee conducts inspections of boats and equipment does not reduce the responsibilities of the competitors as set out in this Notice of Race.

8. SAILING INSTRUCTIONS

The Sailing Instructions will be available no later than December 20, 2024, online at [5o5 WORLD CHAMPIONSHIPS 2025](#).

9. VENUE

- 9.1 Attachment A shows the location of the venue.
- 9.2 Attachment B shows the proposed location of the racing area.

10. THE COURSES

- 10.1 The courses to be sailed will be defined in the Sailing Instructions. They may include windward – leeward and windward – leeward triangular courses.
- 10.2 Gate starts will be used for all races unless otherwise determined by the Race Committee.

11. PENALTY SYSTEM

- 11.1 Decisions of the International Jury will be final as provided in RRS 70.5.
- 11.2 Arbitration as per RRS Appendix T will apply.

12. SCORING

- 12.1 The World Championship, Australian Championship and Pre- Worlds series will both be scored as provided in RRS Appendix A using the Low Points System.
- 12.2 Australian entries will be scored separately for the Australian Championship from World Championship races.
- 12.3 One race is required to be completed to constitute Pre-Worlds Series.
- 12.4 Four races are required to be completed to constitute a series in the World Championship, Australian Championship.
- 12.5 (a) When fewer than five races have been completed, a boat's series score will be the total of her race scores.
- (b) When five to eight races have been completed, a boat's series score will be the total of her race scores excluding her worst score.
- (c) When nine or more races have been completed, a boat's series score will be the total of her race scores excluding her two worst scores.

13. SUPPORT VESSELS

- 13.1 All support vessels shall register on the regatta website at [5o5 WORLD CHAMPIONSHIPS 2025](#)
- 13.2 All Support vessels are required to comply with local legislation and the event support vessels regulations – Addendum C Organising Authority.
- 13.3 The Organising Authority may refuse registrations and accept later registrations at their sole discretion
- 13.4 Support vessels drivers must identify those boats they are supporting when registering with the Organising Authority.
- 13.5 Support vessels with team leaders, coaches and other support person shall stay outside areas where boats are racing from the time of the preparatory signal for the first fleet to start until all boats have finished or the Race Committee signals a postponement, general recall or abandonment. (Outside areas where boats are racing also includes areas where support vessels and boats will affect the wind conditions of boats still racing, especially at the finish.)
- 13.6 All coaches and other support person shall wear personal flotation devices which are in good condition and are in accordance with the Australian Standard or equivalent International Standard. The driver shall be connected to the engine kill switch at all times.
- 13.7 All support vessels shall clearly display the identification flag provided at coach

registration.

- 13.8 Support vessels are required to monitor the safety VHF radio frequency at all times and shall be required to undertake safety duties at the direction of the Race Officer.
- 13.9 All registered support vessels shall comply with support vessel regulations posted on the notice board.
- 13.10 Support vessels must at all times obey directions that may be given by the Race Committee.
- 13.11 Support vessels must register with the Organising Authority.
- 13.12 All support vessels shall have third party liability insurance with a minimum cover of AUD\$10,000,000 per event or equivalent. A certificate of such insurance shall be shown during registration.

14. COMPETITOR BERTHING

- 14.1 Boats will be parked in ASC lawn as directed.
- 14.2 Containers will be placed in the vicinity of Adelaide Sailing Club car park and easily accessible throughout the Event.
- 14.3 Support vessels will be berthed as directed by the Organising Authority.

15. RADIO COMMUNICATION

- 15.1 Except in an emergency, a boat that is racing shall not make voice or data transmissions and shall not receive voice or data communication that is not available to all boats, this includes text messages and cellular phone calls unless using equipment provided by the Organising Authority.
- 15.2 VHF hand held radios are permitted to be tuned to the regatta channels and used per 15.1 as an additional safety management level for the event.

16. PRIZES

Prizes will be awarded as follows:

- First three places in the Pre-Worlds Regatta
- First ten places in the World Championship
- First six places in the Australian Championship
- First three places in the Classic 505 Division
- First in each race
- Highest place youth team (both team members born on or after 1 January 1994)
- Highest place female competitor
- Highest placed mixed gender team
- Appropriate class perpetual trophies will also be presented.
- Additional prizes may be awarded

17. DISCLAIMER OF LIABILITY

- 17.1 Competitors participate in the regatta entirely at their own risk. See RRS 3, Decision to Race. "The responsibility for a boat's decision to participate in a race or to continue *racing* is hers alone".
- 17.2 The Organising Authority will not accept any liability for material damage or personal injury or death sustained in conjunction with or prior to, during, or after the regatta.
- 17.3 Sailing is by its nature an unpredictable sport and therefore inherently involves an element of risk. By taking part in the event, each competitor agrees and acknowledges that:
 - 17.3.1 They are aware of the inherent element of risk involved in the sport and accept responsibility for the exposure of themselves, their crew and their boat to such inherent risk whilst taking part in the event;
 - 17.3.2 They are responsible for the safety of themselves, their crew, their boat and their property whether afloat or ashore;
 - 17.3.3 They have a responsibility to familiarise themselves with any risks specific to this venue or this event and to attend any safety briefing held at the venue
 - 17.3.4 They accept responsibility for any injury, damage or loss to the extent caused by their own actions or omissions;
 - 17.3.5 Their boat is in good order, equipped to sail in the event and they are fit to

- participate;
- 17.3.6 The provision of a race management team, patrol vessels and other officials and volunteers by the event organiser does not relieve them of their own responsibilities.

18. INSURANCE

Each participating boat shall be insured with valid third-party liability insurance with a minimum cover of AUD\$5,000,000 per incident or the equivalent third - party liability insurance cover for the event can be provided at registration. The Club Marine Third Party Insurance Application Form can be found on the event website.

19. CANCELLATION

- 19.1 The Organisers are entitled to cancel or postpone the event at any stage without liability for reasons beyond the reasonable control of the Organisers. In the event of such cancellation entry fees shall not be refunded.
- 19.2 In the event of cancellation by the Organiser for other reasons the Organiser may refund entry fees less a reasonable sum in respect of irrecoverable costs incurred by the Organiser but shall not otherwise be liable to participants.

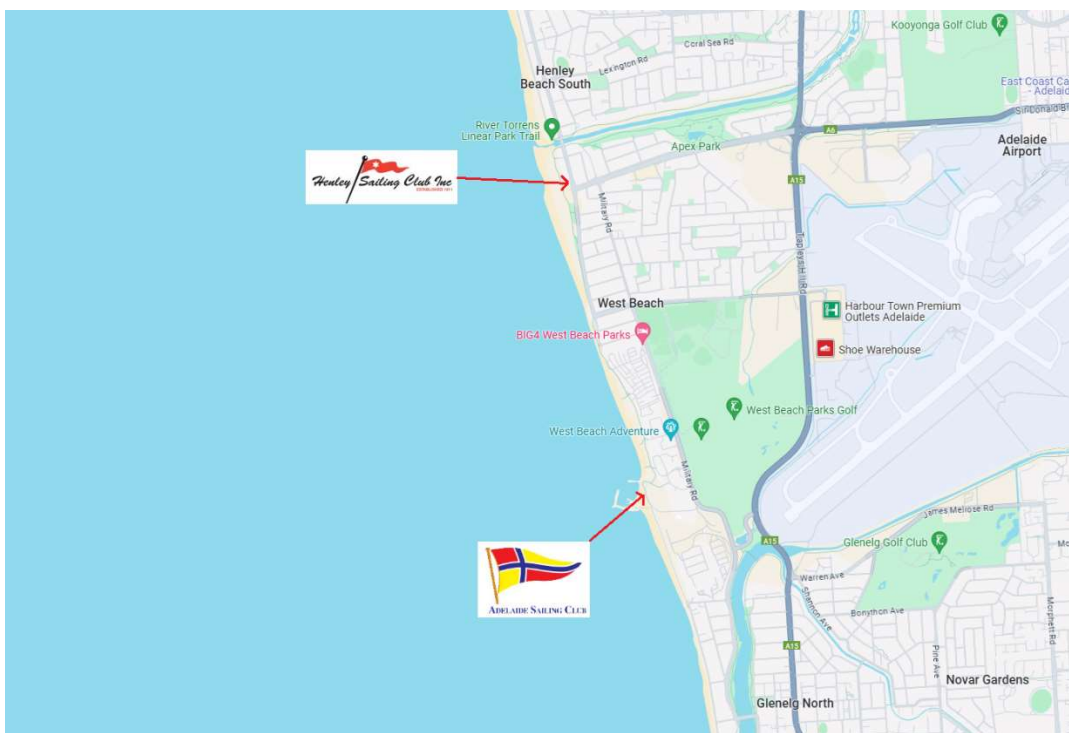
20. FURTHER INFORMATION

<p>For further information please contact</p>	<p>World Championships Organising Committee Chairperson - Malcolm Hughes Ph +61 411 135 988 E: vice_commodore@adelaidesailingclub.com.au</p> <p>Commodore Adelaide Sailing Club – Donna Evans Ph +61 408 833 332 E: commodore@adelaidesailingclub.com.au</p> <p>Commodore Henley Sailing Club – Marcus Cooper Ph +61 419 830 931 E: mwcooper@bigpond.net.au</p>
<p>Venue details</p>	<p>Home - Adelaide Sailing Club</p> <p>Home - Henley Sailing Club</p>
<p>Event Website</p>	<p>5o5 WORLD CHAMPIONSHIPS 2025</p>

Attachment A 2025 World Championship Adelaide Sailing Club's Location

located at:

9 Barcoo Road
West Beach, SA, 5024



Attachment B 2025 World Championship Approximate Racing Area





ATTACHMENT C

Support Vessel Regulations

GENERAL

- 1.1 This Support Vessel Regulations (SVR) shall apply from first day of registration until the end of prize giving ceremony.
- 1.2 For the purposes of these regulations, a support vessel includes any vessel that is under the control or direction of a person who is or may provide physical or advisory support to an athlete, including the gathering of data that may be used at a later time.
- 1.3 All support vessels must conform to SA Boat Regulations, including safety equipment.
- 1.4 The organizing authority may inspect vessels at any time to ensure that they comply with these regulations, and the person responsible for the vessel shall facilitate such inspection.
- 1.5 The organizing authority may change these regulations at any time. Any changes will be posted on the official notice board.
- 1.6 Support vessels and designated drivers shall be registered at the race office either before leaving the venue by water for the first time or by 1800 on the day before the first race of a competitor that it is supporting, whichever is earlier.
- 1.7 Each support vessel driver shall confirm registration of their vessels and submit the names and sail numbers of the boats they are supporting at the race office before the end of registration.
- 1.8 Each vessel shall be insured with valid third-party liability insurance with a minimum coverage of USD \$1,500,000 (or equivalent) per incident.
- 1.9 Only the registered person may be a designated driver.
- 1.10 The person registering the support vessel shall sign to confirm that:
 - 1.10.1 he / she holds a valid insurance certificate showing proof of third-party liability coverage as required by SVR 1.8;
 - 1.10.2 the designated driver has a motorboat driving license recognized by a national authority appropriate to that vessel;
- 1.11 Support vessels shall be marked as follows:
 - 1.11.1 The three-letter MNA code shall be clearly displayed on both sides of the vessel in strongly contrasting colours at all times while afloat;
 - 1.11.2 The minimum height for the letters shall be 200mm. The letters will not be provided by the organizing authority;
 - 1.11.3 A Support Vessel Number label, if supplied by the organising authority, shall also be clearly displayed on the support vessel.

SAILING VENUE

- 2.1. Only support vessels that are registered will be allowed into the sailing venue.
- 2.2. When not in use, support vessels shall be appropriately berthed at the sailing venue in the allocated areas for support vessels for the entire time that these SVR apply.

SAFETY

- 3.1. Support vessels shall carry on board:
 - 3.1.1. Life jackets / buoyancy aid for all passengers and the driver;
 - 3.1.2. First-aid kit;
 - 3.1.3. VHF radio;
 - 3.1.4. Device for making a sound signal;
 - 3.1.5. Compass;
 - 3.1.6. Adequate anchor and tackle for conditions and depth;

- 3.1.7. Tow rope (minimum 15m long and 10mm thick);
- 3.1.8. Operational engine kill cord (also known as a safety lanyard or automatic engine immobilizer);
- 3.1.9. Knife.
- 3.2. The kill cord shall be used at all times when the engine is running.
- 3.3. Support vessels shall sign on and off each day via means to be confirmed in the sailing instructions.
- 3.4. Support persons are responsible for overseeing the safety of their support vessels on the water, including knowledge of who is afloat and ensuring their safe return to the venue.
- 3.5. At all times, the registered driver(s) of a support vessel shall comply with directions given by a race official. In particular, this includes assisting in rescue operations when requested to do so.

GENERAL RESTRICTIONS

- 4.1. The registered driver(s) of a support vessel will be responsible for the control of the vessel at all times and will be held responsible for any inappropriate behaviour, dangerous actions or improper practices, or actions affecting the fairness or safety of competition.
- 4.2. Support vessels shall not leave any device, piece of equipment, buoy, marker or similar item permanently in the water. Temporary use of floating objects is allowed for current measurement. These objects shall be removed as soon as the measurement has been taken.
- 4.3. Support vessels should take particular care to minimize their wash when transiting the course areas.

SUPPORT VESSEL ZONE

- 5.1. Support vessels shall not be positioned:
 - 5.1.1. Closer than 100 meters of any boat racing;
 - 5.1.2. Within 100 meters of the starting line and marks from the time of the preparatory signal until all boats have left the starting area, or the race committee signals a postponement or abandonment;
 - 5.1.3. Between any boat racing and the next mark of the course;
 - 5.1.4. Within 100 meters of any mark of the course while boats are in the vicinity of that mark;
 - 5.1.5. Within 100 meters of the finishing line and marks while boats are finishing.
 - 5.1.6. In addition, support vessels that are motoring above 5 knots shall remain at least 150 meters from any boat racing.

General Information – Not Part of the Notice of Race

About the Club/Venue:

Adelaide Sailing Club was formed from the union of Glenelg Sailing Club with Holdfast Bay Yacht Club who's histories date back to the late 1800's.

This union took place in 1998 with the construction of these world class facilities at the end of Barcoo Road as part of the Holdfast Shores development of Glenelg.

Adelaide Sailing Club is the premier dingy club with keel boat facilities in Adelaide, and has hosted several major regattas including the most recent ILCA Australian and Oceania Championships, ILCA 7 Men's World Championships and ILCA Masters World Championships which attracted in excess 650 sailors across 4 weeks of sailing in January and February 2024.

The Club has large public car parking, balcony which overlooks the rigging and race areas and ramp access for coach and race management craft. Downstairs contains male and female changerooms, kiosk and can bar. The upstairs bar and bistro is managed by "[Fuego by the Sea](#)" with Argentinian, Spanish, Italian and Mediterranean cuisine.

Web: [Home - Adelaide Sailing Club](#)

Email: manager@adelaidesailingclub.com.au

Tel: +61(8) 8490 3923

Contact Person: Kay Went

Location details:

Street address: 9 Barcoo Road, West Beach, South Australia 5024

ASC is located centrally on Gulf St Vincent, less than 20 minutes west of Adelaide's CBD and less than 10 minutes from Adelaide Airport. ASC offers direct gulf access for sailors.

Venue Opening:

ASC traces its origins back to the late 1800's. The current main clubhouse was built and opened in 1998 following the merger of Glenelg Sailing Club and Holdfast Bay Yacht Clubs.

HSC was founded in 1911 rich with historic 14 footer history. The current club house was built by the members in 1955 with the 5o5 fleet being established in the 60's.

How to get to the venue:

By Car: 9 Barcoo Rd, West Beach SA 5024. On-site parking available

By Plane: ASC is located less than 10 minutes' drive from Adelaide International and Domestic Airports.

By Bike: ASC is centrally located on the Adelaide metropolitan coast, with no hills to negate within 10-12km, travelling by bike is done with relative ease, including access to several bike paths. For more information, go to [SA.GOV.AU - Cycling maps \(www.sa.gov.au\)](http://SA.GOV.AU - Cycling maps (www.sa.gov.au))

Accommodation and Travel:

Checkout Accommodation across the area: [Accommodation - Budget, Luxury & Caravan Parks | Adelaide Beaches](#). Further information and links can be found on the [accommodation page](#) on the website.

If you are having trouble finding something suitable, then don't hesitate to reach out to one of the locals as we may be able to assist.

Explore the local area: [Eat, Shop, Stay & Explore | Adelaide Beaches](#)

Tourism in South Australia : [Supporting South Australia's tourism industry | Tourism SA](#)

Weather and Current:

The summer months between December and February witness the highest temperatures in Adelaide, with mean temperature about 26.3°C (79.3°F) and a water temperature of about 20.5°C (68.9°F). Temperature highs can be +45 degrees on occasions. Sun exposure is intense- sunscreen and hat for sailing essential, and drink more water than less to avoid dehydration- (common illness with European visitors this time of year)

Typical afternoon breezes sea onshore gradient SW and regular sea breezes with a wind speed average of 25-30 km/h (13-16 kts) at 3.00 pm. Sea state in the gulf is dependent on tide and wind direction and can range from relatively flat with a small chop in an off-shore breeze, to a sea state of 1-2 metres in a prevailing on-shore breeze.

ASC Live Weather and other links [Weather - Adelaide Sailing Club](#)