



HMAS GOORANGAI MEMORIAL TROPHY ELIZA RAMSDEN TROPHY 2025

The Organising Authority is the Queenscliff Cruising Yacht Club Inc. (QCYC)
And with the assistance of the Royal Brighton Yacht Club (RBYC)

SAILING INSTRUCTIONS November 1st 2025

1. RULES

- 1.1. The Races will be governed by the current rules as defined in The Racing Rules of Sailing (RRS) of World Sailing (WS)
- 1.2. The Prescriptions and Special Regulations of Australian Sailing (AS) will apply.
- 1.3. The Yachting Victoria Keelboat Handicap Rule (PHS) will apply.
- 1.4. The Notice of Race, except as amended by these Sailing Instructions.

2. NOTICES TO COMPETITORS

- 2.1. Notices to competitors will be emailed to registered entrants not later than 20:00 on Friday 31st October and may be repeated on VHF Ch.77 at 09:00 on Saturday 1st November 2025.
- 2.2. Notices to competitors will be posted on the QCYC website at www.queenscliffcruisingyachtclub.org.

3. CHANGES TO SAILING INSTRUCTIONS

- 3.1. Any change to the sailing instructions will also be advised by email or radio, VHF CH. 77 at 09:00 on Saturday 1st November 2025.
- 3.2. Any change or amendment to these sailing Instructions may be posted on the QCYC website.
- 3.3. Where possible any such changes may also be communicated by email or sms to the relevant skipper/owner prior to 2000 on 31st October 2025.

3.4. SIGNALS MADE ASHORE, OR BY RADIO

- 3.5. Signals made ashore will be displayed on the flag mast situated on the western wall of the RBYC Clubhouse and the flag mast located at the RBYC Race Control Tower, on the Middle Brighton Pier.
- 3.6. When flag AP is displayed ashore, boats will be advised by radio VHF Channel 77, when it is lowered and the new starting time advised.
- 3.7. Each boat shall carry a VHF transceiver capable of transmitting on Ch 12,16, 67, 77, and 82.
- 3.8. Ch 82 will be used for Race Control 15 mins after the Start.

4. SCHEDULE OF RACE

- 4.1. The race will be conducted on 1st November 2025
- 4.2. The time of the first warning signal will be 09:25 .

5. RACING AREAS

- 5.1. Racing will be on the waters of Port Phillip between Brighton and Queenscliff.

6. THE COURSE

- 6.1. Course Start (RBYC Tower) in a Southerly direction
- 6.2. Transit 1 Port Melbourne Channel to Starboard
West Channel Pile to Starboard
West Channel 13 to Port
West Channel 4 to Starboard
Finish (near Queenscliff)

7. MARKS

Mark	Approximate Position (Guide Only)
RBYC 6 (starting mark)	37 54' 35 S 144 58'53 E
Transit 1	38 00.0 S 144 55.6 E
West Channel Pile	38°11.3 S 144°45.2 E
West Channel 13 (alternative finish line)	38° 11.9 S 144°45.9 E
West Channel 4	38deg 14.875'S 144deg42.413'E

8. THE START

- 8.1. The Race will be started in accordance with RRS 26 with the warning signal made 5 minutes before the starting signal and using code flag "R" as the class flag.

- 8.2. The starting line will be between the black vertical line displayed on the western side of the Race Control Tower and the starting mark (RBYC 6).
- 8.3. A pink/yellow crowding mark may be laid off the breakwater. When laid, this mark shall be considered an extension of the Race Control Tower.
- 8.4. A boat starting later than 20 minutes after her starting signal will be scored DNS without a hearing. This changes RRS A4

9. THE FINISH

- 9.1. The Finish line will be between the Port hand Mark (West Channel Pile 2 (38deg 15.615'S . 144deg 42.421E approx.) and the Starboard hand Mark QR13 commonly referred to as the Swan Spit Mark (38deg 15.386'S . 144deg 42.155'E approx.) The Diagram depicting the Finish line is applicable to 2024 .
- 9.2. The race may be shortened at the West Channel Pile. Competitors will be advised by QCYC on VHF CH.82 if the race is to be shortened. The finish line for a shortened course will be between the West Channel Pile and West Channel Mark No. 13. This alters RRS 32.
- 9.3. At both finishing locations, competitors shall take their own finishing time. Competitors shall call QCYC on VHF CH.82 or text the RO on mob 0429 982832 or phone (03) 5258 1692 immediately after finishing to report their location and finishing time.
- 9.4. Regardless of a Shorten Course implementation all Competitors shall take their time at the finish line of the West Channel Pile and West Channel Mark No 13.
- 9.5. Time Limit: All yachts not completing the Race by 16:30 on Saturday 1st November 2025 shall be deemed DNF.(Amends RRS 35)

10. AREAS THAT ARE OBSTRUCTIONS

- 10.1. The following areas are designated as obstructions:

BONNET ROCK

Bonnet Rock is marked by an unlit starboard beacon located at 37° 54'.82 S 144° 58'.81 E and is surrounded by VERY SHALLOW WATER. This pile shall be passed on the seaward side.

11. PROTESTS AND REQUESTS FOR REDRESS

- 11.1. Protest forms are available in the QCYC Members' Bar. Protests and requests for redress or reopening shall be delivered to the QCYC OOD within the appropriate time limit.
- 11.2. Protests may be emailed to secretary@qcyc.org.au.
- 11.3. Protests will be heard at RBYC during the following fortnight.

12. SAFETY REGULATIONS

- 12.1. The Yachting Australia Special Regulations Part 1, Sections 1 – 6, apply.
- 12.2. Section 6.01.2 Routine Training states that it is recommended that crews should practice safety routines at reasonable intervals, including the drill for man-overboard recovery.
- 12.3. The Safety Category for the race will be Category 5.
- 12.4. Personal flotation devices shall be worn at times of heightened risk in accordance with Victorian Legislation. This alters RRS Race Signal Y.
- 12.5. A boat that retires from a race more than 15 minutes after the start shall notify the race committee on VHF radio channel 82 as soon as possible, and communicate to the Race Director any relevant information as to their safety and destination.

13. RADIO COMMUNICATION

- 13.1. Except in an emergency, a boat shall neither make radio transmissions while racing nor receive radio communications not available to all boats. This restriction also applies to mobile telephones.
- 13.2. QCYC and RBYC Race Control will monitor and use VHF 82 from 15 minutes after the Start
- 13.3. All boats shall maintain a listening watch on VHF 82 and VHF 16 .

14. COMMERCIAL SHIPPING

- 14.1. Marine regulations require that boats shall avoid commercial shipping. Boats which find themselves in danger of interfering with commercial shipping may use their engine to avoid interference and will not be penalised under RRS 42 provided that:
 - 1.1. It is used only as necessary to avoid the commercial shipping in question,
 - 1.2. No advantage is gained through its use, and
 - 1.3. A declaration containing a complete description of the circumstances is submitted to the Race Committee within the protest time limit.

This alters RRS 42.

1.4 Competitors shall make themselves familiar with the Harbour Master's Directions HMDs & Port Information Guide (vicports.vic.gov.au) with particular reference to section 5: Nautical Services and Communication, and VTS zones.

1.5 Yachts with AIS shall have their instruments operating during the Race.

15. PRIZES

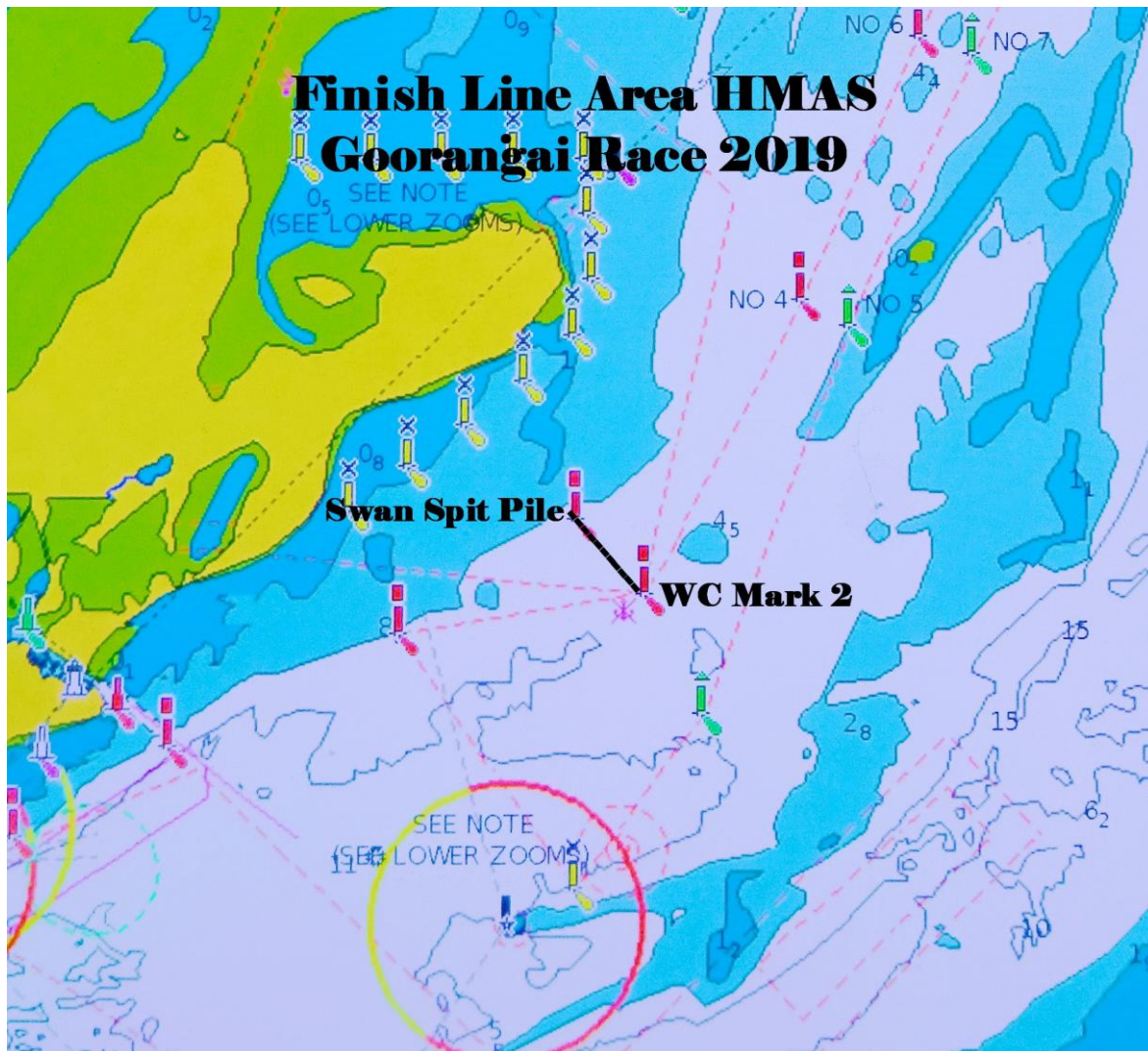
- 15.1. Prizes will be awarded to the boats placing first, second and third on handicap in each race.

16. DISCLAIMER OF LIABILITY

- 16.1. Competitors participate in the regatta entirely at their own risk. The organizing authority will not accept any liability for material damage or personal injury or death sustained in conjunction with or prior to, during, or after the regatta.

17. INSURANCE

17.1. Each participating boat shall be insured with valid third-party liability insurance with a minimum cover of AUD \$10 Million per incident or the equivalent.



Note: This diagram also applies to HMAS Goorangai Race 2025

Approximate Positions (Guide only)

West Channel Pile 2 (Mark 2): 38deg 15.615'S 144deg 42.421E

Mark QR13 or Swan Spit Pile: 38deg 15.386'S 144deg 42.155'E

